

Taking control of your contracts and your costs

Pegasus Construction Industry Solutions have been specifically designed to give complete control over every aspect of contract management, from contract costing, timesheets and payment applications through to VAT invoicing and cash receipt matching. Fully integrated to the Sales, Purchase and Nominal Ledgers and conforming to Construction Industry Scheme regulations, Pegasus CIS provides an unparalleled level of management control over your contracts and subcontractors.

Pegasus CIS transforms the hectic day-to-day running of a construction project into a manageable proposition, where all relevant data is immediately available, and all queries from a client or subcontractor can be serviced from a single application.

Fast and easy-to-use

Pegasus CIS is designed to allow fast retrieval of information held anywhere in the system; is intuitive and very easy to use. List views of subcontractors, jobs, purchase orders, or indeed any data table in Pegasus CIS and the accounts system, can easily be setup; this data can be sorted, filtered, grouped and totalled to display the selected data in the format required. These views can also be sent to Microsoft® Excel for further data manipulation and saved for future use.

Instant access to up-to-date information is a powerful tool for any business, but in construction this can be critical to the effective management of contracts and jobs.

CONTRACT COSTING

Cost control is critical in the construction industry: effective cash management can make a serious difference to the profit on a job. Pegasus CIS Job Costing captures all relevant contract information across all stages of a job so that the status of the contract is immediately available for analysis.

Cost Heads

Each job can be subdivided into an unlimited number of Cost Heads, each of which can be linked to nominal accounts for automated journals. Each job Cost Head holds separate information on budgets and costs to date. All job cost transactions are posted to a Job and a Cost Head. Cost Heads can represent cost categories such as labour or materials, each with an unlimited number of subheads. Alternatively, Cost Heads can represent job stages. This flexible approach allows the costs to be structured in the way that best suits the needs of your business.

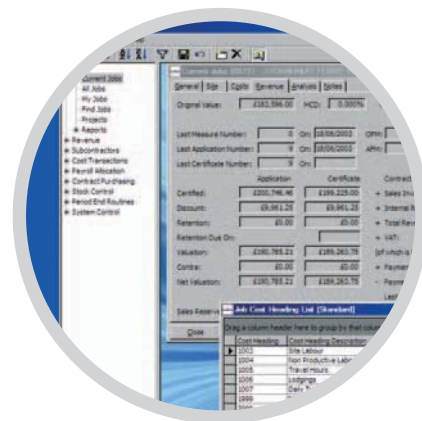
Cost Transactions

A detailed audit file is held for all costs and revenue posted to each job. This information can be displayed per Job or per Cost Head. This data can be sorted, filtered and grouped, giving instant on-screen analysis of all costs, which can be simply transferred to Microsoft® Excel for further analysis.

Posting Costs

Costs are posted to the job as detailed transactions from the sources listed below. Summary totals are also maintained at Job and Cost Head levels. Flexible on screen enquiries are available for all transactions.

- Time Recording
- Payroll
- Subcontractors Ledger
- Purchase Invoice Register
- Stock Control
- Internal Cost Allocations, Job Journals and Direct Costs



CONTRACT PURCHASING

Contract Purchasing

Purchasing requirements for each contract can be controlled and monitored by raising purchase orders to a supplier against a contract. Each PO can have an unlimited number of items. Each item comprises a description (free text or lookup), material group (for costing and analysis), quantity originally ordered and price. PO items can be browsed directly and sorted by criteria such as due date, supplier and job, making it easy to monitor what is outstanding against a job and when it is due to be delivered.

GRN & Purchase Invoices

As goods are received and invoiced, PO details are updated on an item-by-item basis, maintaining an accurate picture of committed costs against the job. The Purchase Invoice Register also allows the user to allocate costs directly to the Nominal Ledger as well as to the jobs.

CONTRACT SALES

Contract Sales

Pegasus CIS includes a self contained Contract Sales Ledger which works in conjunction with the Accounts Sales Ledger. Contract Sales maintains details of the current Applications (through valuation, Application and certified values) as well as all previous Applications.

Each Payment Application controls current and cumulative Revenue Values, Retention and Main Contractor Discount. Applications can be classed as Interim, Final, Agreed Final Measure (AFM) and Amend AFM.

Payments Received

Cash received can be entered in batches and allocated to one or more Applications. For Applications, VAT is taken into account at time of payment. For standard invoicing, VAT is recorded at date of invoice.

Aged Debt

A complete audit trail of each Application and Payment is maintained, providing detailed aged debt analysis and reporting against jobs. Knowing when payments are due is critical to the successful management of cash flow within any organisation.

CIS SUBCONTRACTORS

Comprehensive CIS Contractor Control

The Subcontractors Ledger combines the functionality of a Purchase Ledger with the regulatory requirements of the Inland Revenue's Construction Industry Scheme. Pegasus CIS stores full information on the CIS approved Subcontractors, including details of their CIS Certificates and expiry dates.

Subcontractors are assigned to jobs via the Subcontractor's Orders file. One Subcontractor Order is raised per subcontractor/job combination and holds information such as order value, start and completion dates. It also holds defaults on the discounts and retention percentages to be applied, together with a VAT code and Construction Industry Training Board Levy. These defaults are used in automatic processing of subcontractor payments, making this a much less time consuming process.

CIS Certificates

CIS Certificates are processed in a register, enabling incomplete certificates to be included in management reports. Each certificate records current and cumulative values of net, gross, discounts and retentions. Labour and material content is recorded separately, conforming to the Inland Revenue's regulations.

When certificates are approved and updated, a cost entry is raised against the job and the cumulative value is updated on the Subcontractor's Order. A separate posting routine is provided for Subcontractor invoices/timesheets, and allows invoices to be split over one or more jobs.

CIS Payments

Approved certificates can be selected for payment by due date from the Pending Payments file. Those payments selected for processing are posted to a payments batch that automatically updates the Tax and VAT liabilities in the Nominal Ledger. Subcontractor payments can be made by cheque or BACS. Payment Certificates are produced for approved payments and can be sent to the subcontractor with the payment.

Pegasus CIS provides full Construction Industry Scheme reporting for monthly and annual returns; you simply print the relevant report.



INTEGRATED ACCOUNTING

Pegasus CIS integrates directly with Pegasus and Sage financial ledgers and payroll. Pegasus CIS posts transactions into the Sales, Purchase, Nominal Ledgers and Cashbook & Payroll. A truly integrated solution to manage the finances of today's busy construction companies.